

-----

Mariele Neudecker has been selected to install a permanent art installation in the new Cancer Centre at Guy's Hospital in London, due for completion spring 2016.

### Concept

Mariele's proposal developed into an abstract and conceptual approach to the idea of a tall rainforest, represented in a range of media across the entire building (audio, 3D imagery, video and themed garden/planting scheme). These components are inter-connected by an overall sense of a parallel between the buildings in the 'urban jungle' and the growth pattern in a full height rainforest.

Primarily, a video will be installed into each of the three lifts. "With the three visitor-lifts set into a glass-shaft, I immediately saw the opportunity to use them as mobile and constantly shifting viewing posts, out to the cityscape around and also into 'another world' [MN]." Mariele has already affected the lift-design to include windows so that patients, staff and visitors can see the city horizon as the lifts ascend and descend. Synchronised with the movement of the lifts, video monitors will display the layers of the rainforest from undergrowth to canopy, and above.

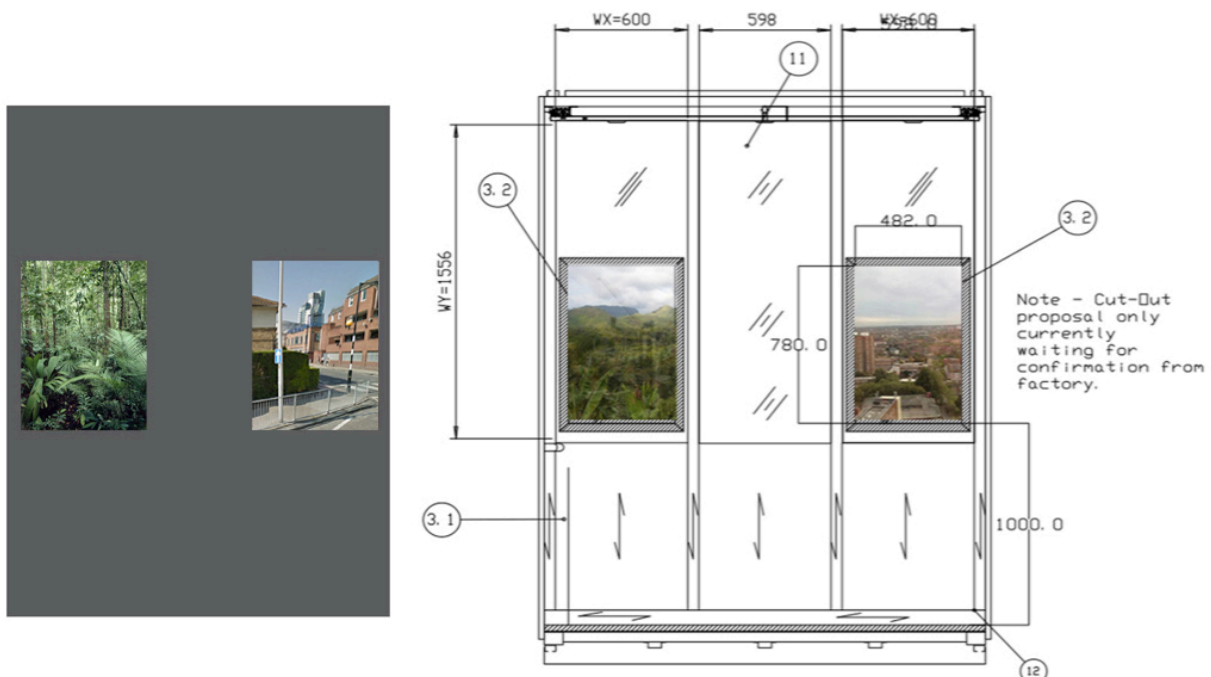
The rainforest as a theme in the cancer centre will offer refuge into another, exotic world, that is soothing, relaxing and stimulating. Plants have medicinal properties, especially those found in rainforests; they are known for their calming and reassuring qualities, lowering our levels of stress and anxiety. The issues raised by using forest imagery will add engaging elements to the clinic; they will encourage discussion, and allow positive awareness of our rainforests, which are disappearing at alarming rates all over the globe.

### Location

The location is Tiputini Biodiversity Station in Ecuador. The site is suited for its visual richness, dense and diverse foliage with clearly defined layers. Additionally, the height of the cancer centre is approximately 40 metres tall; therefore the 40 metre canopy towers at TBS will match this.

### Content

We would like to capture three different times of day from three different positions/locations. Therefore the patients staff and visitors will have a variety of experiences when taking the lifts.



above: technical drawing of Cancer Care Centre lift from Kone elevators, with MN's visualisation of monitor + windows

## Sound & Photos

Incorporating forest layers through the whole building, one can additionally explore the different zones with sound installations and through 3D stereoscopic viewers of forest imagery.



left: a preliminary model for MN's stereoscopic viewers, right: 'hanging garden' by Capella Garcia Architecture, Barcelona

## About Guy's Hospital's Cancer Centre

"Having talked to patients a lot about their experience of cancer treatment, we've involved patients in the process of carrying out the design... One of the key themes that came through from patients was that people who have experienced radiotherapy tend to go and have to do it in the basement, and they feel like they're going down into an airless dungeon for their treatment, and the plea from patients was please, please can we be above ground, in an area with natural light? – the design that we chose has the radiotherapy department on the second floor." [Alastair Gourlay – programme director for the Cancer Centre]

This feature is perhaps the most remarkable, unique factor about the new Cancer Care Centre, and was immediately noted by Mariele from the first site visit in 2013. At that stage, they were laying foundations, which go deeper than the Shard's – the tallest building in the EU, which is located right next to Guy's Hospital, our site. Going to this great length in order to create a better environment for patients, is where the art commissions come in, and reinforces the first of Guy's & St. Thomas NHS Foundation Trust's three main aims:

- *Patient centred - with patients at the heart of our services they can benefit from exceptional patient experience and access to care*
- *Research driven - so that patients can benefit from cutting-edge research and the latest technologies. Our researchers and clinicians will lead the way in discovering the causes of cancer and developing new treatments*
- *Clinically led - our highly experienced staff help to make sure our cancer services are of the highest quality.* [<http://www.guysandstthomas.nhs.uk>]

As well as having cutting edge technology and being an innovative hub for scientific research, there is an emphasis on the important role of art in the planning of this new building:

"Art can help people recover faster. It is intuitive, we all feel better in a beautiful space. Research also demonstrates how visual arts and good design contribute to the improved wellbeing of patients, staff and visitors... Art within the new Cancer Centre will be used not only to transform spaces; it also helps people find their way around the building." [<http://www.guysandstthomas.nhs.uk>]

Mariele Neudecker's installations will be permanently installed, alongside highly regarded artist Angela Bulloch and designer Gitta Gschwendtner.

**Links / more info about the art in the Cancer Care Centre:**

Guy's and St Thomas' NHS Foundation Trust

<http://www.guysandstthomas.nhs.uk/our-services/cancer/cancer-centre/cancer-centre-art.aspx#na>

Guy's & St Thomas' Charity

<http://www.gsttcharity.org.uk/what-we-do/our-impact/stories/new-cancer-centre-guys-hospital>

Future City (art project managers)

<http://futurecity.co.uk/portfolio/guys-st-thomas-cancer-centre/>

<http://futurecity.co.uk/wp-content/uploads/2014/04/GSTT-for-web.pdf>

Rogers Stirk Harbour + Partners LLP (architects)

<http://www.rsh-p.com/render.aspx?siteID=1&navIDs=1,4,25,1722>

Mariele Neudecker

<http://www.marieleneudecker.co.uk/>