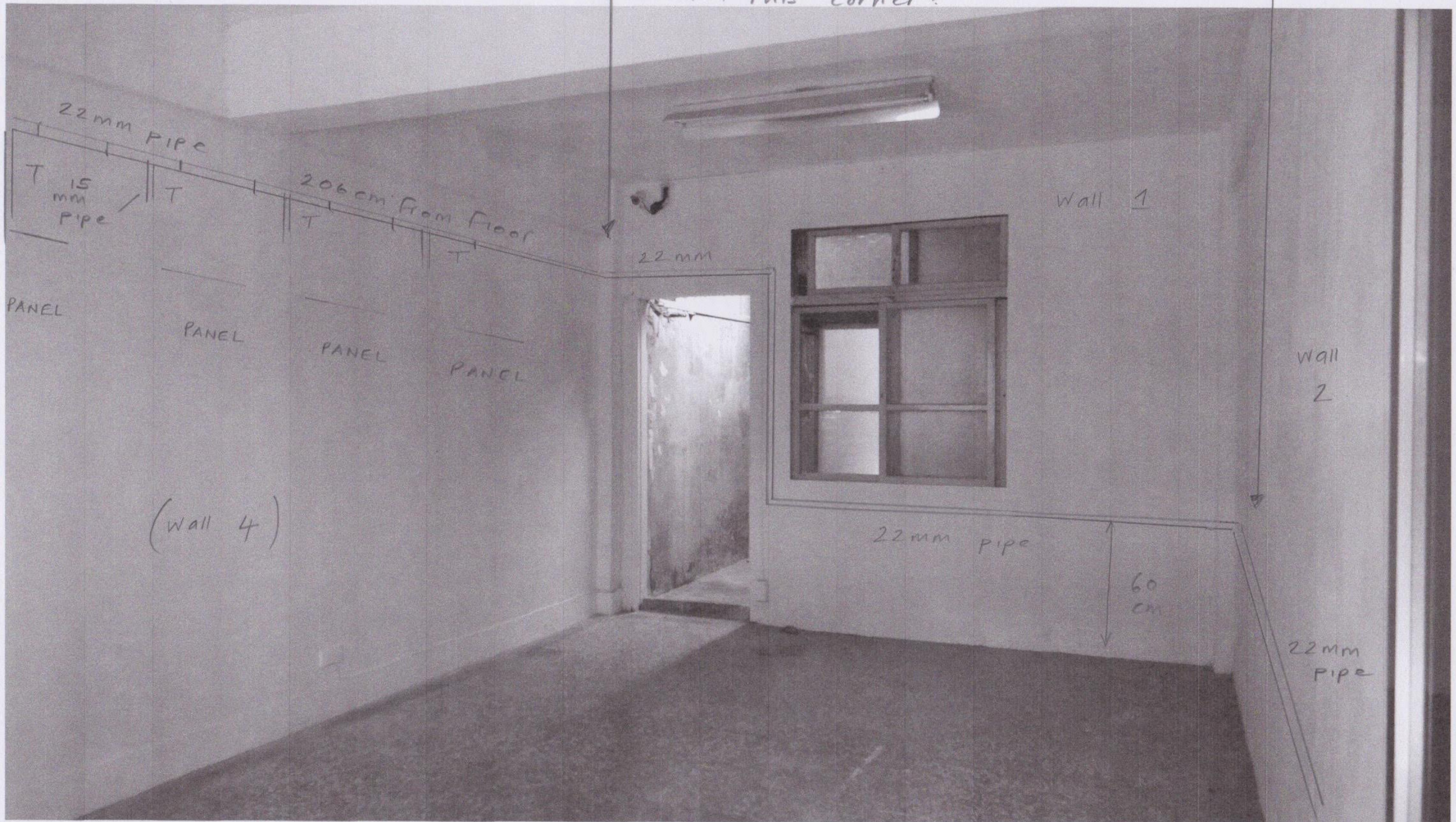


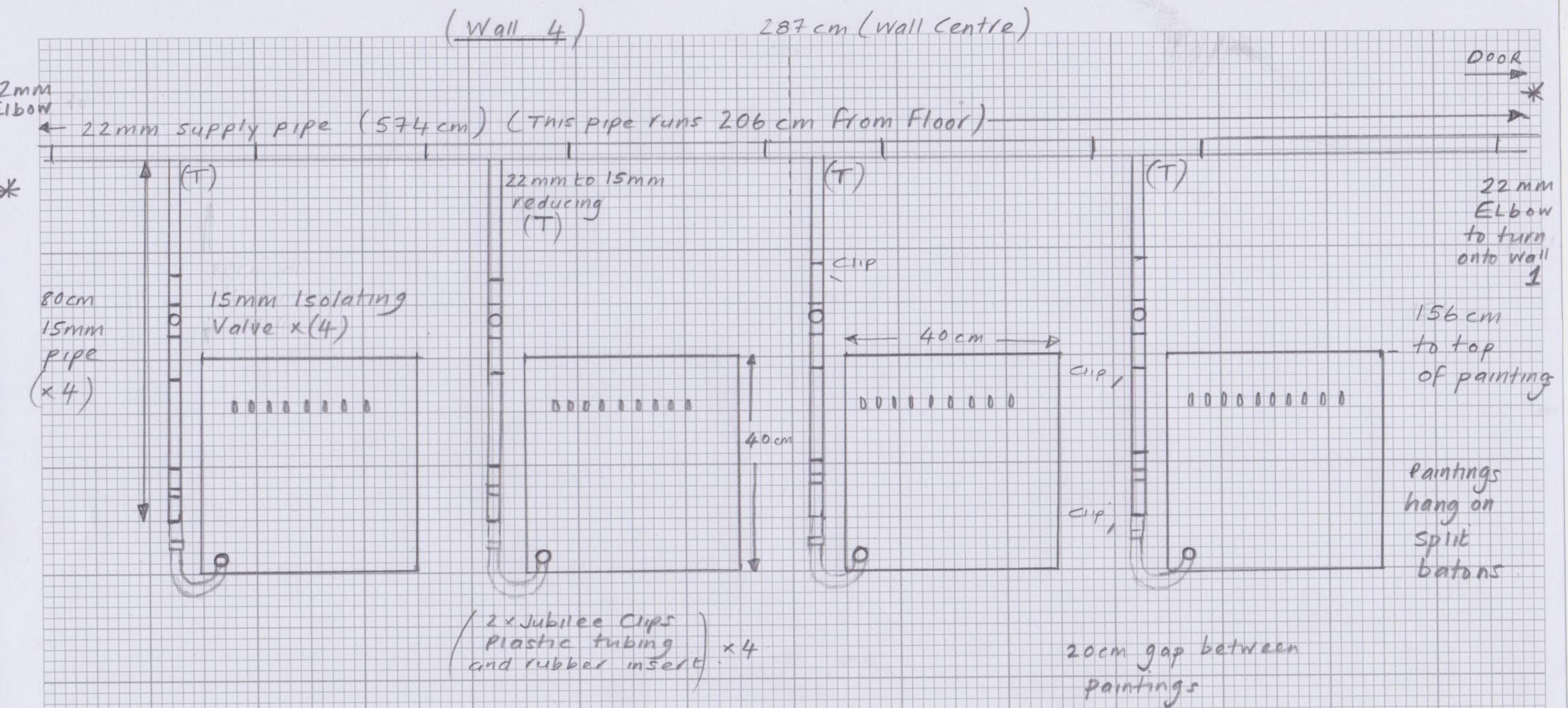
\* What happens here?

How does <sup>22mm</sup> pipe move  
around this corner?

\* What happens  
here?







80cm x 4 (15mm pipe) (320 cm x 15mm pipe)

600 cm of 22mm pipe

4 x (22mm to 15mm reducing T)

8 x Jubilee Clips (12mm to 20mm) or (16mm to 25mm) (Drill Wall plugs)

4 x Isolating Valves (15mm)

(10 Clips for 22mm pipe to wall)

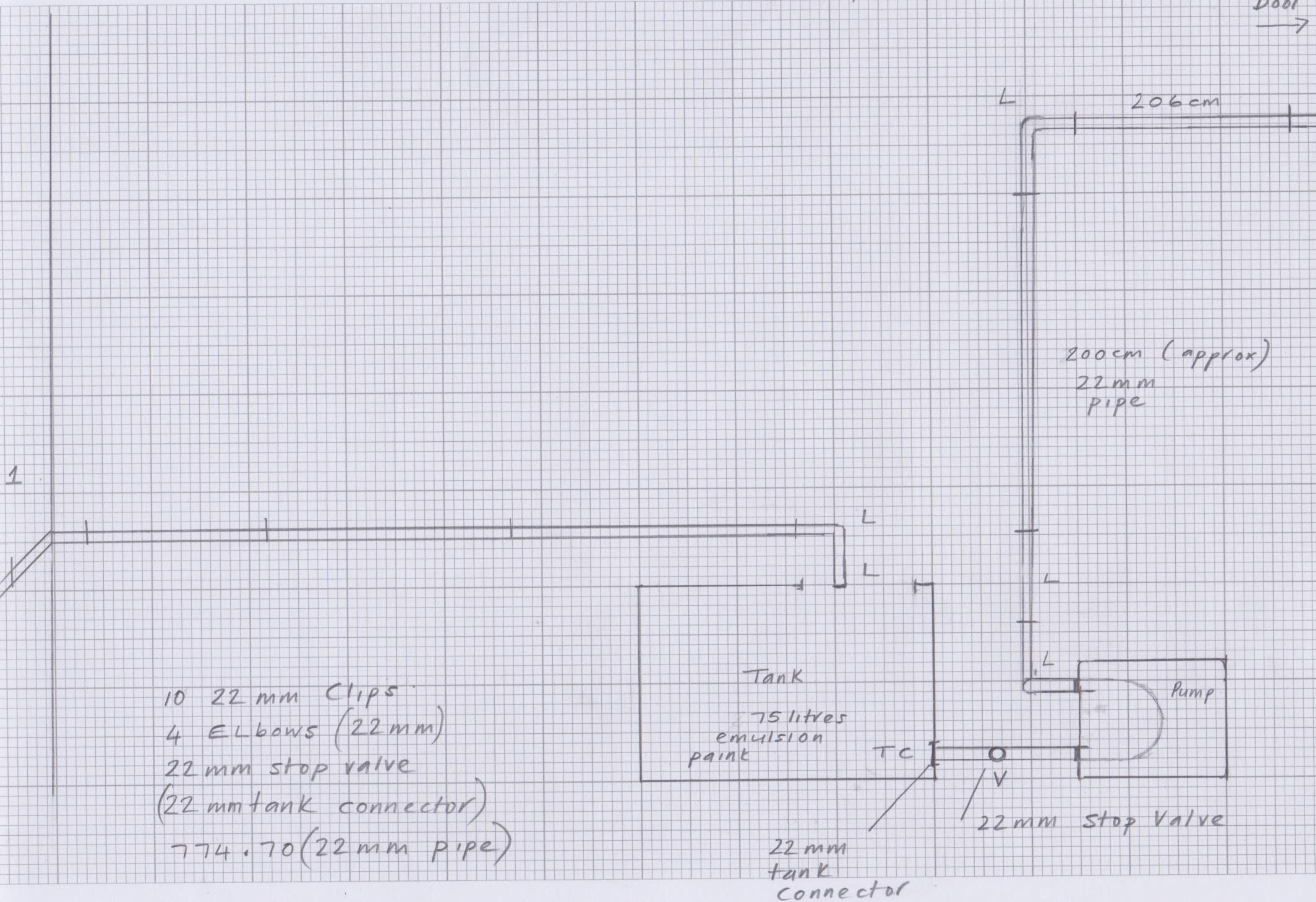
(12 Clips for 15mm pipe to wall)



(Wall 2)

574.7 cm

Door  
→



- 10 22 mm Clips
- 4 ELbows (22 mm)
- 22 mm stop valve (22 mm tank connector)
- 774.70 (22 mm pipe)

Tank

75 litres  
emulsion  
paint

TC

22 mm Stop Valve

22 mm  
tank  
connector

Pump

206 cm

200 cm (approx)  
22 mm  
pipe



(Wall 1) and (Wall 3)

CORNER ?  
can this be  
an elbow ?

Elbow

Clip

22mm pipe

Window

140  
cm

Door  
way

Elbow

60cm from floor

372 cm

412 cm (22m pipe)

10 (Clips for 22 mm pipe to wall)

2 x Elbows (22 mm)

(Wall 4)